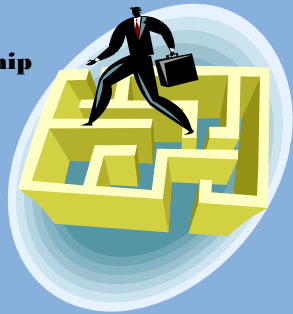
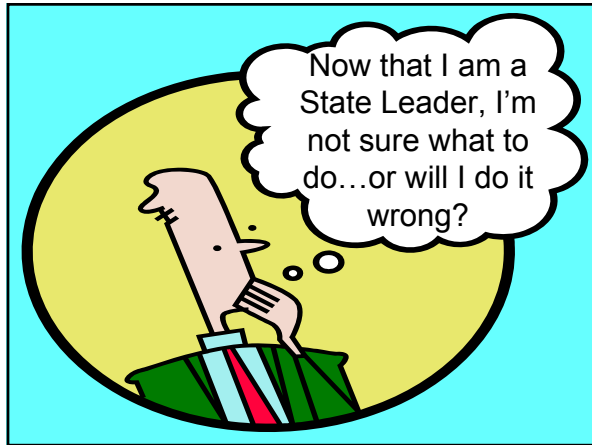


Pathway to Leadership

National Leadership
Conference

LaCosta 2009





My success depends on...

#1

#2

#3

#4





Know Your Association

- ▣ Governing documents
- ▣ Strategic and annual plans, if any
 - ▣ Minutes from the past 3 years
- ▣ Annual financial statements – 3 years
 - ▣ Budget from last 2 years
 - ▣ Publications, if any
 - ▣ Services/programs
 - ▣ By-laws/procedures

Know your Resources - Just how can SNA help you?

Resources/Tools from SNA

- Publications
- Website
- Leadership Handbook
- Volunteer Leadership (Directory of Lea SNA Staff)
- Promotional Brochures (membership, conferences, webinars, toolkits)

Know Your Association



- Meeting Dates
- Board Planning Book
- Location for Meetings
- Professional development
- Certification/Credentialing
- Conference(s)
- Programs (training/education)
- Policy issues (State & National)

Assess Strengths & Weaknesses

Identify 5 greatest strengths of your association that will work to your advantage as a leader.



Assess Strengths & Weaknesses

Identify 5 weaknesses of the association that may hinder you as a leader.



Shape Your Vision

At the end of my leadership year, our association will....



Develop a Plan



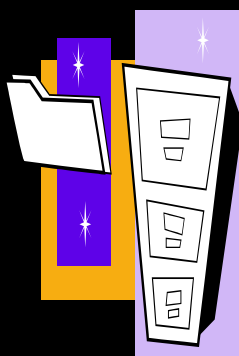
- Tactics
- Time Frames
- Who/Whom
- Resources

Organize Your Resources and Information

Filing system

Binders

Briefcase on wheels



Calendar with all significant dates

Directories

Leadership Handbook




Select Your Team

- Key to success
- Diversity
- Mix of experienced, current and new members
- Get to yes by asking the right way



Craft Your Messages

- Prepare statements/messages that you will use all year
- Prepare strong, well crafted statements with single focus
- Statements should have broad appeal to diverse audiences
- Practice saying the messages with passion



Share Vision & Plan with Team

- Early buy-in and feedback
- Get an early start – momentum
- Inspire your team
- Make them feel special/important
- Build a Plan of Action with your team



Prepare Your "Charges" for the Year

- Committees**
- Area reps**
- National regional reps**
- National regional directors**
- Any other group of volunteers**

What to include in a charge...

- Committee responsibilities**
- Plan of Action assignments**
- Special Assignments**





**You are now ready to be a leader --
The future has come!**

**Looking for leadership?
Look in the mirror.....**

Thank you
